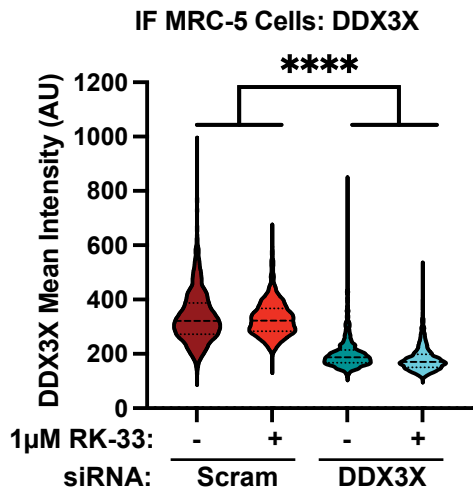
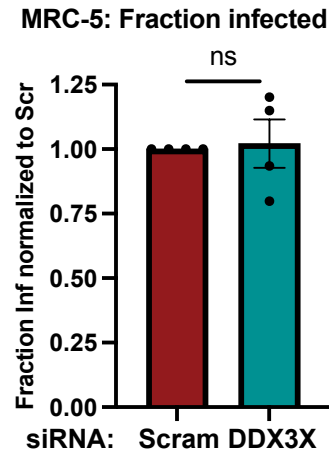
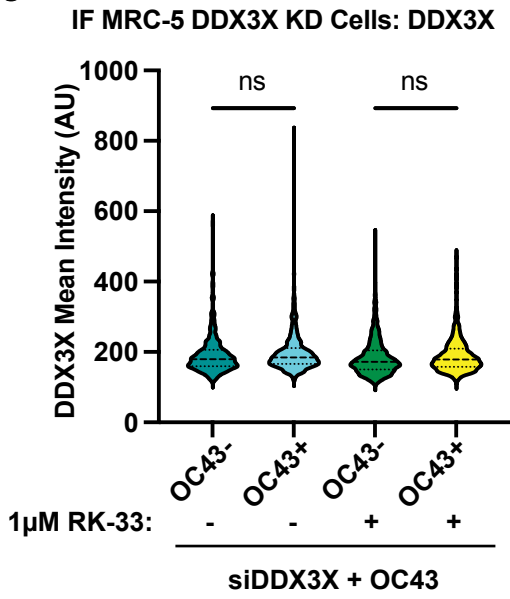
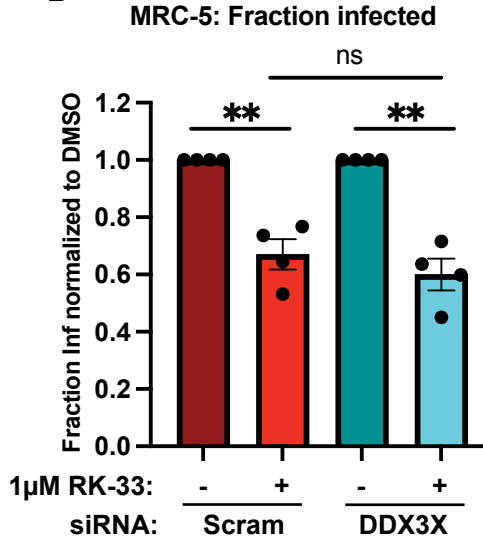


**A****B****C****D**

**Supplemental Figure 2: DDX3X KDs have little impact on OC43 growth in MRC-5 cells.** (Linked with Figure 2) **(A)**. Average DDX3X intensity/cell was quantified in Scram KD or DDX3X KD cells and representative results from four independent experiments are shown. N > 140 cells/experimental condition in each replicate were quantified. **(B)** The fraction of cells infected by OC43 in MRC-5 cells at 8hpi, MOI 0.1 were quantified and normalized to the Scram knockdown control. **(C)** OC43+ cells were identified in DDX3X knockdown MRC-5 cells and average DDX3X intensity/cell was quantified. Representative results from four independent experiments are shown. N > 45 cells/condition in each replicate were quantified. **(D)** Fraction of cells infected by OC43 were normalized to DMSO treatment. Statistical significance: ns = not significant, \*P ≤ 0.05, \*\*P ≤ 0.01, \*\*\*P ≤ 0.001, \*\*\*\*P ≤ 0.0001. Tests used: one-way Anova with Kruskal-Wallis test (Panel A, C), one and two sample t-test (B, D). Error bars represent mean ± means (B, D) and quartiles (Panel A, C).