

Supplementary Data for

**Contribution of an alternative 16S rRNA helix to biogenesis of the 30S subunit of the ribosome**

Benjamin R. Warner and Kurt Fredrick\*

Department of Microbiology and Center for RNA Biology, The Ohio State University, Columbus, Ohio  
43210, USA

**This supplement contains:**

Figure S1

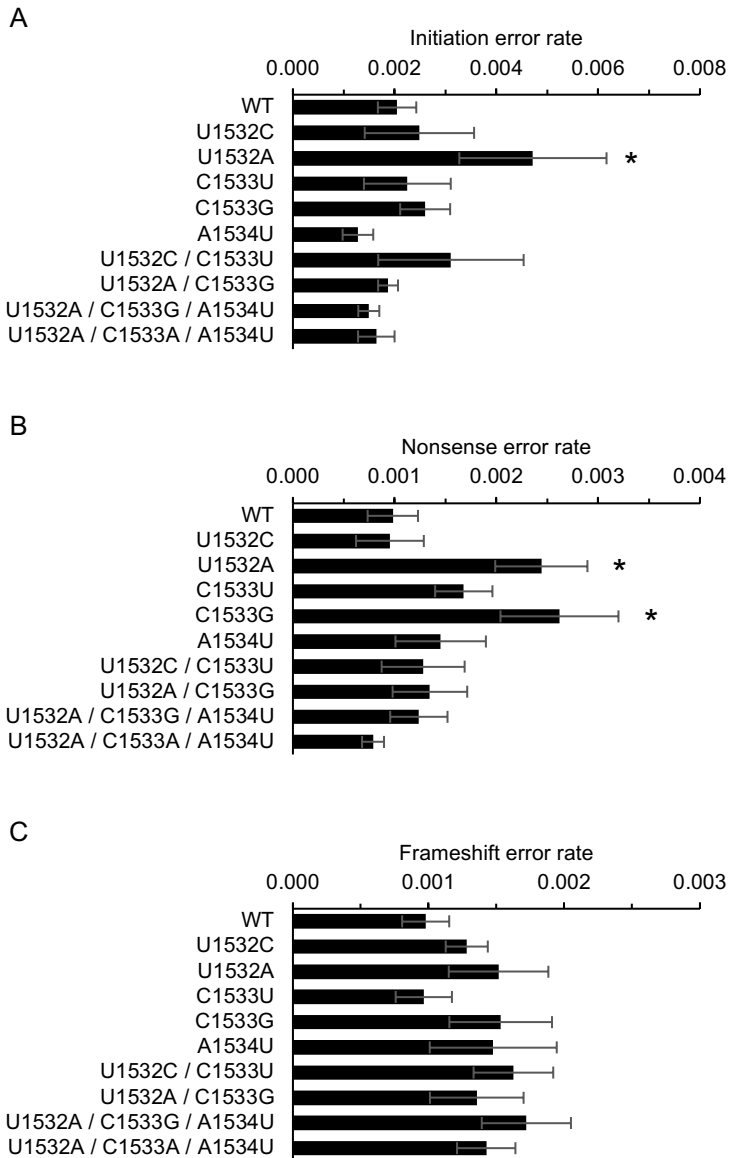


Figure S1. Effects of 16S mutations at positions 1532-1534 on translational fidelity. Rates of spurious initiation from AUC (A), readthrough of UGA (B) and +1 frameshifting (C) of ribosomes made from various constructs (as indicated) were determined. Data represent the quotient of two means  $\pm$  standard error from three or more independent biological replicates. A two-tailed *t* test was used to evaluate differences from the WT. Uncorrected *P* values: (\*), *P* < 0.05.