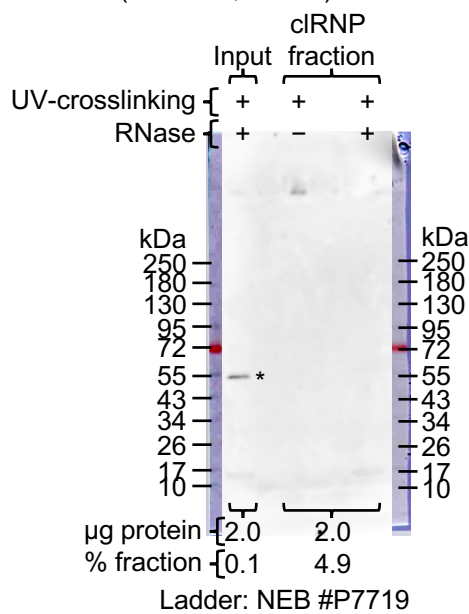
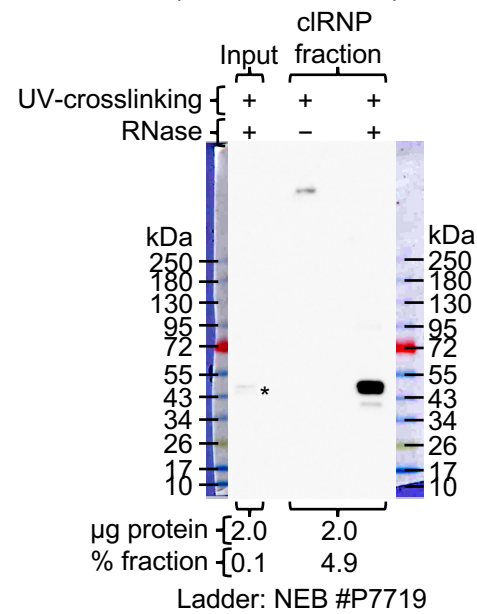


A

1° PDIA3 (ABclonal, A4376)



1°: HNRNPD (ABclonal, A15679)



1°: RanBP2 (ProteinTech/ptglab, 27606-1-AP)

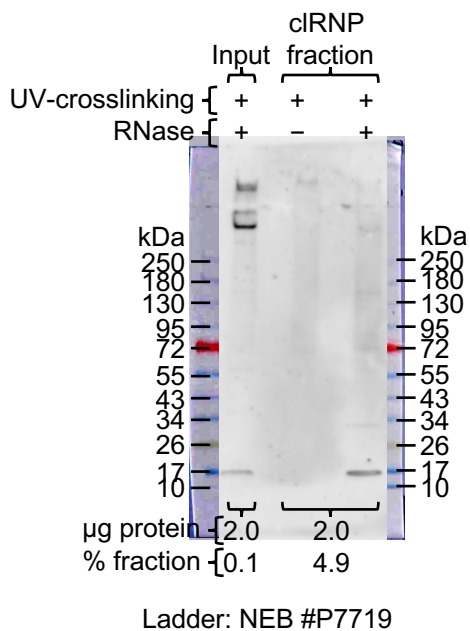


Figure S1. Full blots for WB targets used in main figures. See Supplemental Table S4 for blocking and blotting conditions used for each target. (A), Input samples (total protein) were isolated from UV-crosslinked (0.4 J/cm², 254 nm) and non-crosslinked HeLa cells. LEAP-RBP (cIRNP) fractions were isolated from final AGPC interphase suspensions of UV-crosslinked (0.4 J/cm², 254 nm) HeLa cells. Fractions were normalized to µg of protein as indicated underneath each blot. Full blots for other WB targets used in main figures were reported on previously using the same conditions ([25]; Supplementary Fig. 1a).