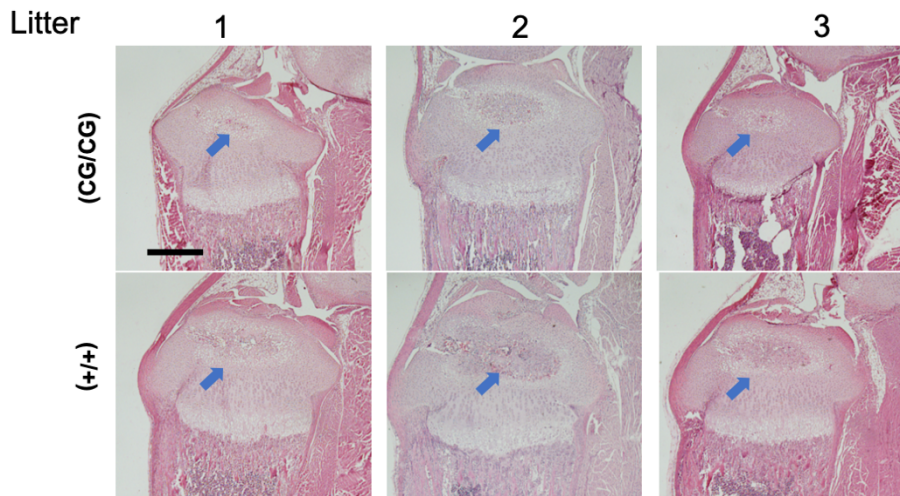
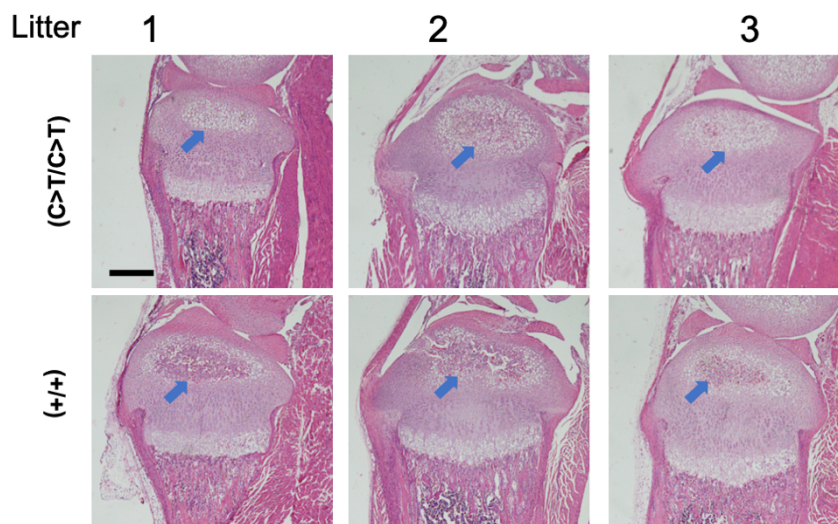


Supplemental Materials

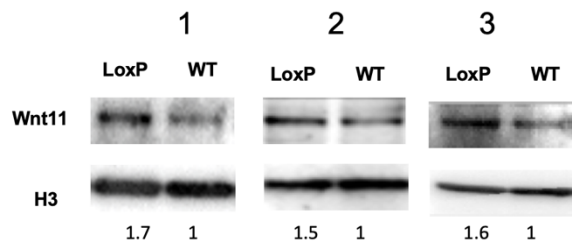
Supplemental Figures



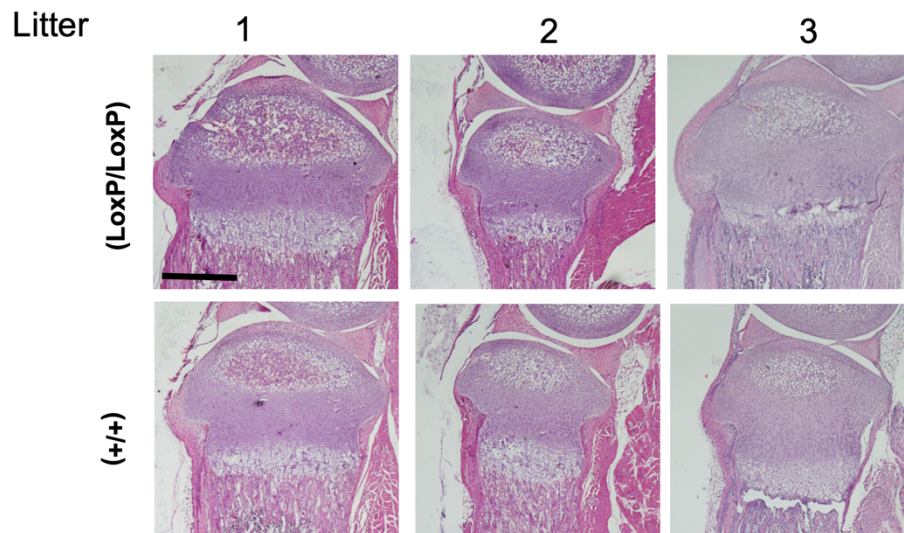
Supplemental Figure 1. Histology of hematoxylin and eosin-stained proximal tibias of three pairs of miR-140-CG mice and littermate controls. Arrows indicate delay in secondary ossification center formation. Scale bar presents 500 μm .



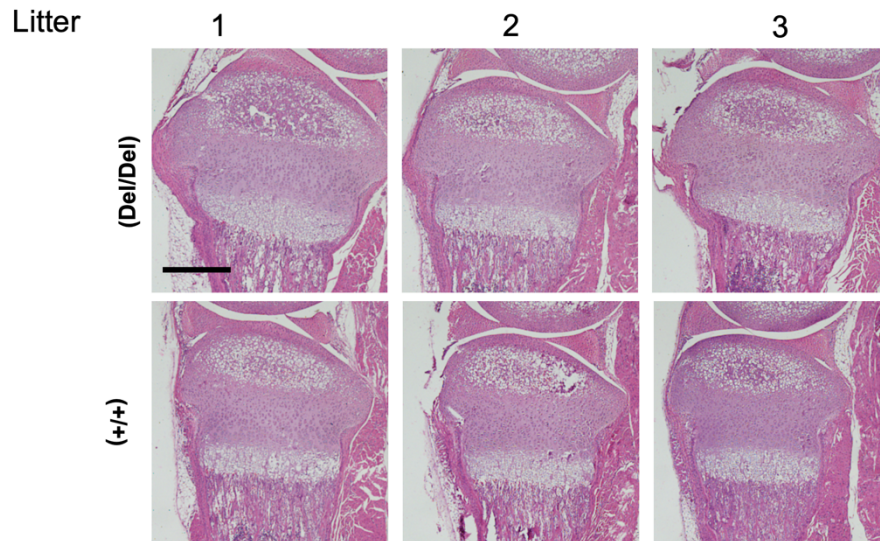
Supplemental Figure 2. Histology of hematoxylin and eosin-stained proximal tibia of miR-140-C>T and littermate controls. miR-140-C>T mutants were compared to littermate controls. Arrows indicate delay in secondary ossification center formation. Scale bar represents 500 μm .



Supplemental Figure 6. upregulation of Wnt11 in primary rib chondrocytes of homozygous Wnt11-LoxP and their wildtype littermate control pairs. The relative signal intensity normalized to histone3 loading control is shown.



Supplemental Figure 7. Hematoxylin and eosin-stained proximal tibias of Wnt11-LoxP mice. Wnt11-LoxP mutants were compared to littermate controls showing a mild acceleration to the epiphyseal development of the proximal tibia consistently. Scale bar represents 500 μ m.



Supplemental Figure 8. Hematoxylin and eosin-stained Wnt11-Del mutant proximal tibias. The histology demonstrated that there is a modest acceleration in the epiphyseal development of the Wnt11-Del mutant mice in pairs 1 and 3 compared to littermate controls. Scale bar represents 500 μm .

Supplemental Table 1. miR-140-3p and -5p miRNAs target lists compiled from TargetScan (v.7.2). The additional gene lists correspond to the Venn diagrams in Figure 4B.