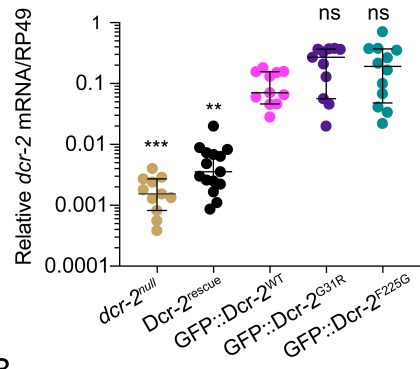
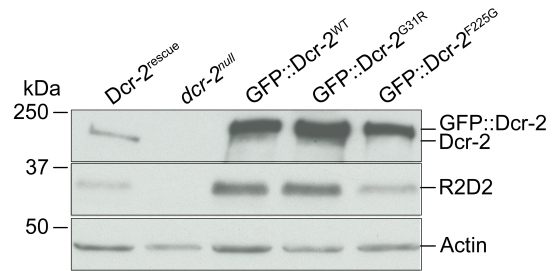


A



B



S1: mRNA and protein levels in Dcr-2 complemented flies. A) Levels of *dcr-2* mRNA from *Drosophila* testes quantified by RT-qPCR, normalized to the housekeeping gene RP49. The median and interquartile range are represented (mean \pm SD, $n = 4$ with biological triplicates). Each dataset is compared to GFP::Dcr-2^{WT}. Kruskal-Wallis test, **, $p < 0.01$; ***, $p < 0.001$; ns, not significant. B) Western blot shows Dcr-2, R2D2, and Actin (loading control) expression levels in tested Dcr-2 genetic backgrounds. Protein extracts from flies contained different variants of Dcr-2 as indicated. In the *dcr-2*^{null} background, the R2D2 protein was undetectable, presumably due to the known instability of R2D2 without Dcr-2 (Liu et al. 2003). When Dcr-2 protein is expressed, R2D2 was detected.