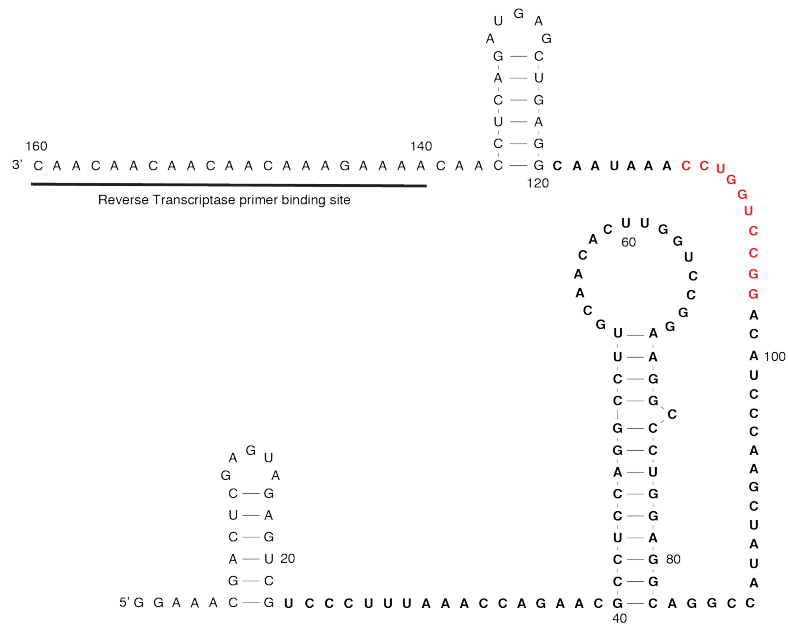
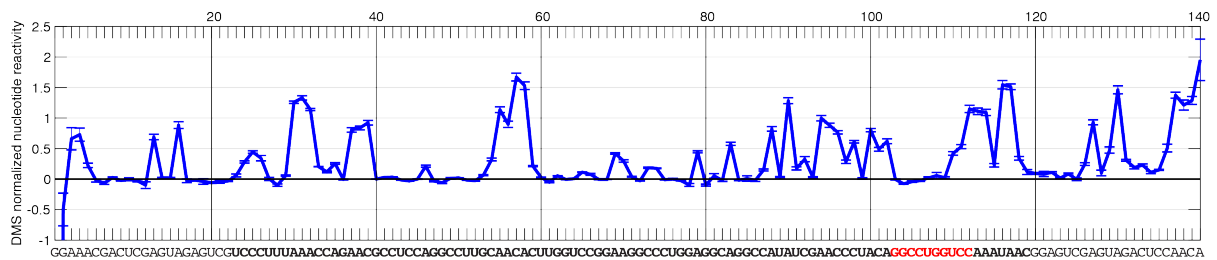
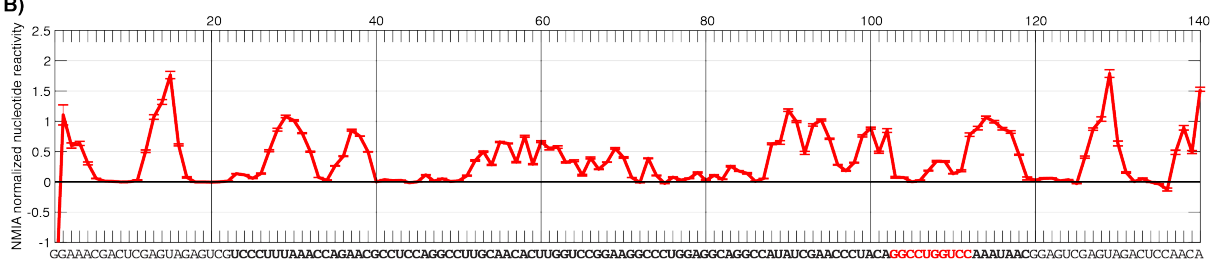


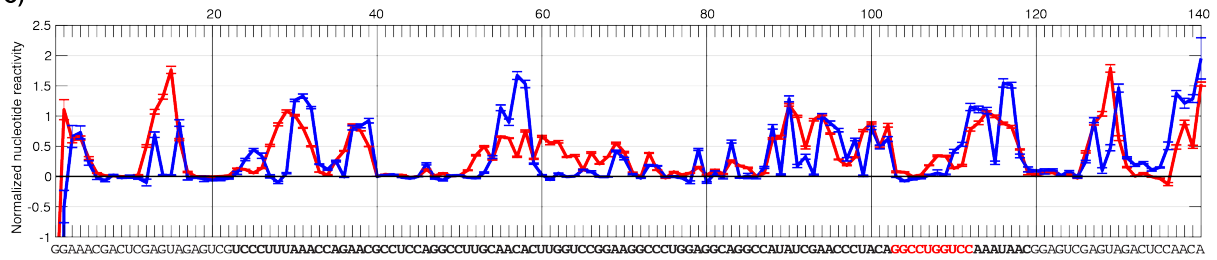
A)



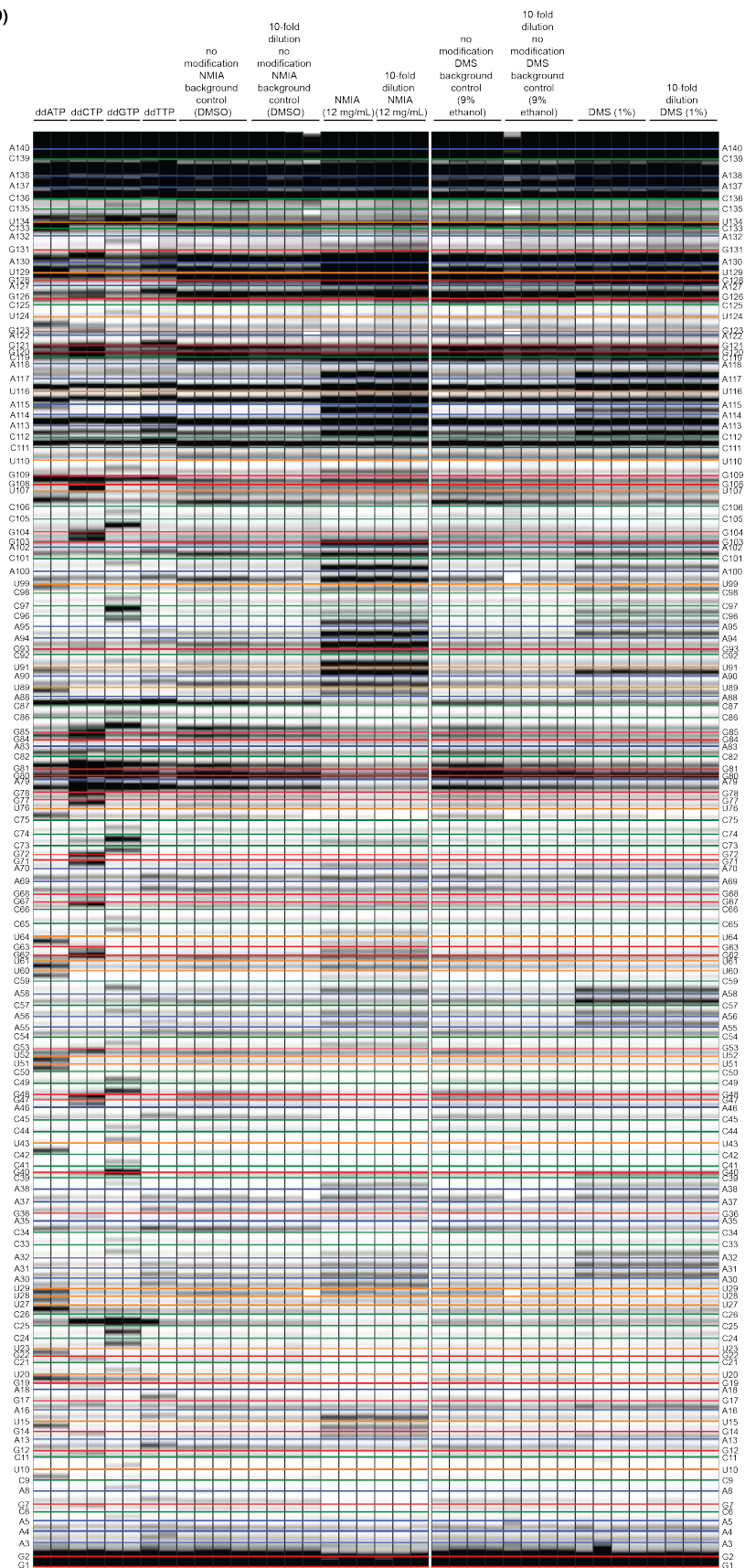
B)



C)



D)



Supplemental Figure S4. Chemical probing of the HTLV-1 PKM1 *pro-pol* frameshift site RNA. A) The RNA cassette used in chemical modification experiments is shown. Nucleotides 2235-2331 from the HTLV-1 consensus sequence (NC_001436.1) are shown in bold. Sequence changes are indicated in red font. B) Normalized and averaged NMIA and DMS nucleotide reactivities for cassette nucleotides 1-140 are shown in red and blue, respectively. Error estimates were calculated using a minimum of three replicates and are shown with horizontal lines. No outliers were detected. C) An overlay of the results from (B). D) The aligned and assigned CE traces for the PKM1 chemical probing experiments. Assignments are shown on the left and right side of the traces with numbering consistent with (A). Colored horizontal lines are positioned just below the corresponding band assignments.