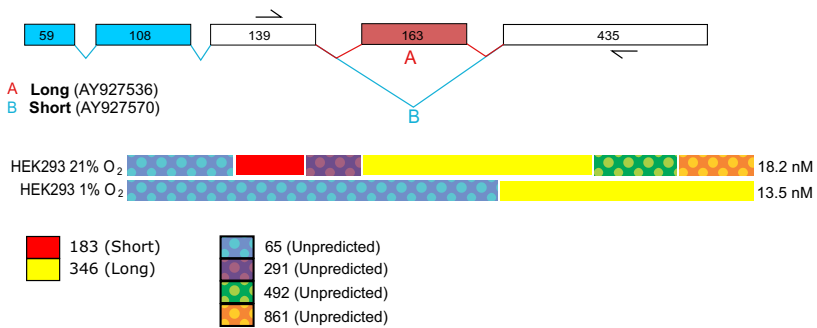
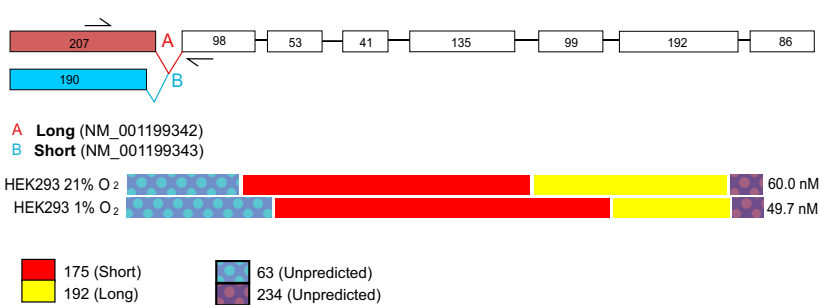


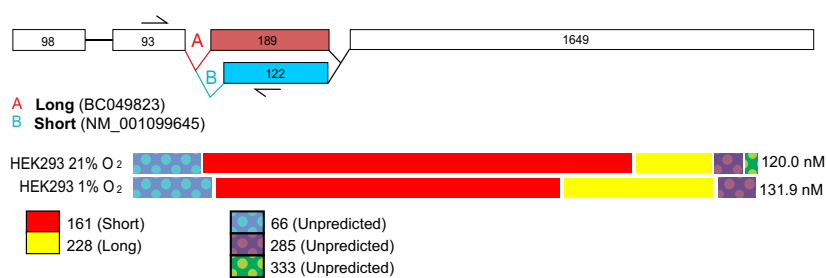
RPL10 e1



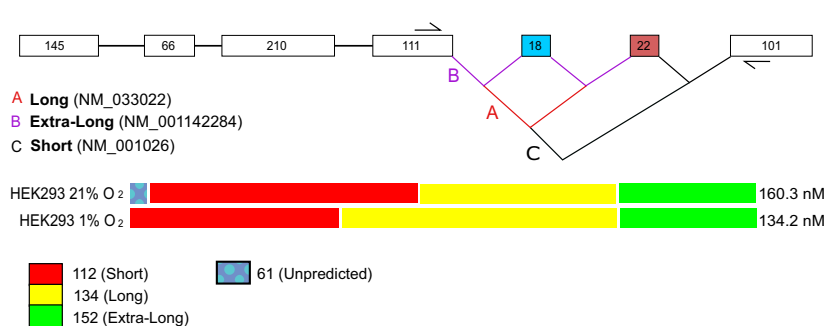
RPL17 e2



RPL22L1



RPS24 e2



RPS9 e3

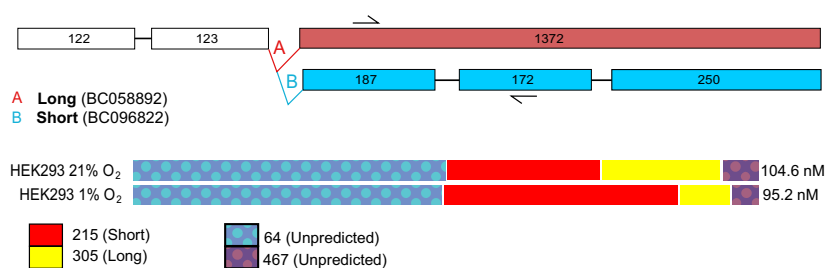


Figure S5. Splicing maps of alternative splicing events with hypoxic Δ PSI > 10%. Shown are the variants amplified by the primer set (harpoons) for each splicing event. The relative length of the colored/patterned bars represents the proportion of that particular amplicon, with the length in base pairs displayed in the legend. Long vs. short nomenclature is based on the size of the amplicon and not the total transcript length. White exons are common to both variants and color-coded exons are variant specific. Maps designed based on AceView.