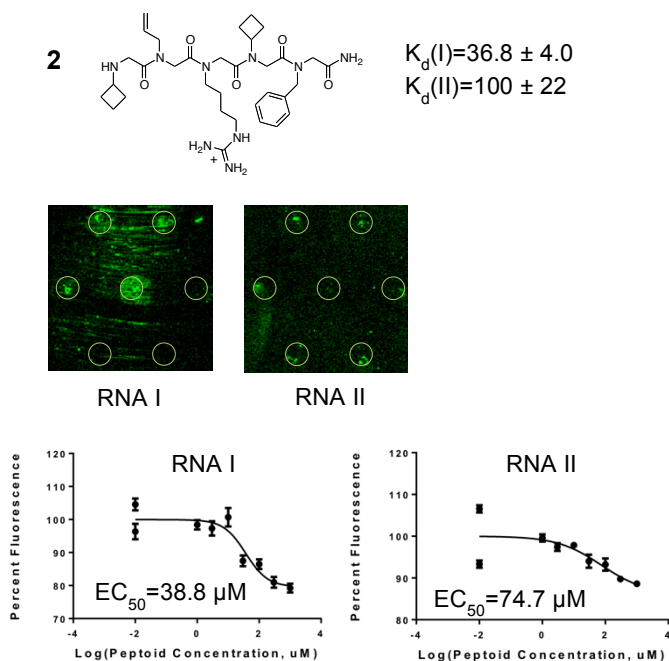
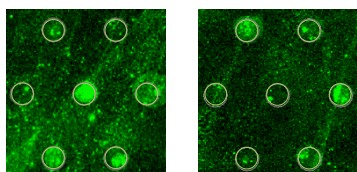
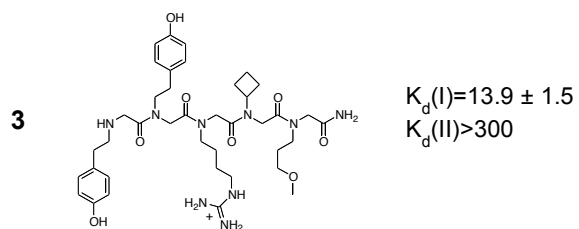


Supplementary Data

Array features and binding curves for compounds **2-12**. For each compound, its array feature and the surrounding six features are shown for arrays treated with RNA I and RNA II. The array feature of the hit compound is the center feature. A grid of circles is overlaid on each scan to indicate the pattern of spotting. Each circle corresponds to an area with diameter of 150 μm .

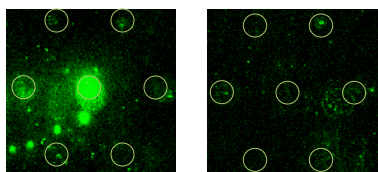
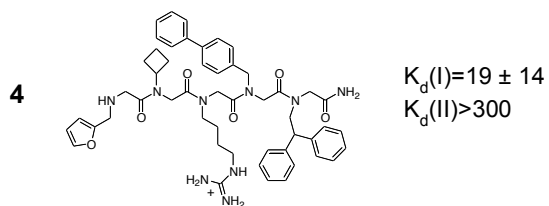
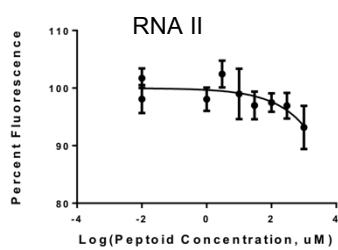
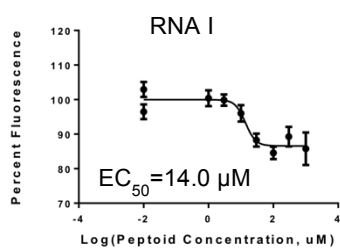
A representative binding curve for each compound with RNAs I and II is shown with the EC_{50} for that experiment. Binding was monitored by fluorescence of 2-aminopurine as described in Materials and Methods. The error bars are the standard deviation of six replicate measurements for each concentration. The reported K_d s are the means of three independently measured EC_{50} s.





RNA I

RNA II



RNA I

RNA II

