

REPORT

Cytoplasmic LSM-1 protein regulates stress responses through the insulin/IGF-1 signaling pathway in *Caenorhabditis elegans*

ERIC CORNES,^{1,7,8} MONTSERRAT PORTA-DE-LA-RIVA,^{1,2} DAVID ARISTIZÁBAL-CORRALES,¹ ANA MARÍA BROKATE-LLANOS,³ FRANCISCO JAVIER GARCÍA-RODRÍGUEZ,¹ IRIS ERTL,¹ MÒNICA DÍAZ,⁴ LAURA FONTRODONA,¹ KADRI REIS,¹ ROBERT JOHNSEN,⁵ DAVID BAILLIE,⁵ MANUEL J. MUÑOZ,³ MIHAIL SAROV,⁶ DENIS DUPUY,^{7,8} and JULIÁN CERÓN¹

¹Cancer and Human Molecular Genetics, ²C. *elegans* Core Facility, Bellvitge Biomedical Research Institute—IDIBELL, L'Hospitalet de Llobregat, Barcelona 08908, Spain

³Centro Andaluz de Biología del Desarrollo (CABD), CSIC – UPO – Junta de Andalucía, Sevilla 41013, Spain

⁴Drug Delivery and Targeting, CIBBIM-Nanomedicine, Vall d'Hebron Research Institute, Universidad Autónoma de Barcelona, Barcelona 08035, Spain

⁵Department of Molecular Biology and Biochemistry, Simon Fraser University, Burnaby, British Columbia V5A 1S6, Canada

⁶TransgeneOmics Unit, Max Planck Institute of Molecular Cell Biology and Genetics, Dresden 01307, Germany

⁷Université Bordeaux, IECB, Laboratoire ARNA, F-33600 Pessac, France

⁸INSERM, U869, Laboratoire ARNA, F-33000 Bordeaux, France

ABSTRACT

Genes coding for members of the Sm-like (LSm) protein family are conserved through evolution from prokaryotes to humans. These proteins have been described as forming homo- or heterocomplexes implicated in a broad range of RNA-related functions. To date, the nuclear LSm2-8 and the cytoplasmic LSm1-7 heteroheptamers are the best characterized complexes in eukaryotes. Through a comprehensive functional study of the LSm family members, we found that *lsm-1* and *lsm-3* are not essential for *C. elegans* viability, but their perturbation, by RNAi or mutations, produces defects in development, reproduction, and motility. We further investigated the function of *lsm-1*, which encodes the distinctive protein of the cytoplasmic complex. RNA-seq analysis of *lsm-1* mutants suggests that they have impaired Insulin/IGF-1 signaling (IIS), which is conserved in metazoans and involved in the response to various types of stress through the action of the FOXO transcription factor DAF-16. Further analysis using a DAF-16::GFP reporter indicated that heat stress-induced translocation of DAF-16 to the nuclei is dependent on *lsm-1*. Consistent with this, we observed that *lsm-1* mutants display heightened sensitivity to thermal stress and starvation, while overexpression of *lsm-1* has the opposite effect. We also observed that under stress, cytoplasmic LSm proteins aggregate into granules in an LSM-1-dependent manner. Moreover, we found that *lsm-1* and *lsm-3* are required for other processes regulated by the IIS pathway, such as aging and pathogen resistance.

Keywords: *Caenorhabditis elegans*; stress response; LSM, *daf-16*; P bodies; stress granules

INTRODUCTION

The presence of a domain forming a tertiary structure known as “Sm-fold” is the common signature of the large Sm/LSm (Sm-like) protein family. Genes encoding Sm/LSm proteins exist in Archaea, Bacteria, and Eukaryotes (Mura et al. 2013; Weichenrieder 2014). The Sm-fold mediates the interaction between Sm/LSm proteins in order to make multimeric complexes involved in many aspects of RNA metabolism (Wilusz and Wilusz 2013). While eukaryotic members of the Sm family form protein complexes that are

components of different snRNPs in the spliceosome (U1, U2, U4, U5, U11, and U12), the LSm proteins have expanded specialized RNA-related functions including splicing, nuclear RNA processing, and messenger RNA decay (Tharun 2009; Veretnik et al. 2009).

Eukaryotic LSm proteins are distributed in two distinct LSm complexes, the nuclear LSm2-8 and the cytoplasmic LSm1-7 (Tharun 2009). Therefore, LSm2 to LSm7 are common subunits of the two complexes, while Lsm8 and Lsm1

Corresponding author: jceron@idibell.cat, jceronmadrigal@gmail.com
Article published online ahead of print. Article and publication date are at <http://www.rnajournal.org/cgi/doi/10.1261/rna.052324.115>.

© 2015 Cornes et al. This article is distributed exclusively by the RNA Society for the first 12 months after the full-issue publication date (see <http://rnajournal.cshlp.org/site/misc/terms.xhtml>). After 12 months, it is available under a Creative Commons License (Attribution-NonCommercial 4.0 International), as described at <http://creativecommons.org/licenses/by-nc/4.0/>.

are specific for nuclear and cytoplasmic compartments, respectively. The nuclear complex binds to U6 snRNA in the U6 snRNP and is involved in splicing, whereas the cytoplasmic complex has been described as an activator of the decapping step in the 5'–3' mRNA decay pathway in P bodies (Tharun et al. 2000; Parker and Sheth 2007).

Besides the above-mentioned canonical LSM complexes, other heteromeric rings have been characterized in yeast and vertebrate cells pointing toward an expanded catalog of LSM functions in the modulation of RNA–RNA and RNA–protein interactions (Tomasevic and Peculis 2002; Pillai et al. 2003; Fernandez et al. 2004). Moreover, by doing RNAi against *lsm* genes in diverse genetic backgrounds, we and others have observed a greater functional complexity than expected from the two described heteroheptameric complexes (Ceron et al. 2007). The goal of the present study is to explore the functions of LSM proteins in *Caenorhabditis elegans* and therefore provide insights into their roles in the physiology and development of multicellular animals.

A phylogenetic analysis based on protein sequences revealed that the *C. elegans* genome contains all eight genes (*lsm-1*, *lsm-2*, *lsm-3*, *lsm-4*, *lsm-5*, *lsm-6*, *lsm-7*, and *lsm-8*) coding for small proteins (77–125 amino acids) of the canonical eukaryotic complexes, and three other genes (Y48G1C.9, K07A1.15, and C49H3.4) coding for small proteins with only Sm domains (Supplemental Fig. S1A). In addition to this set of *lsm* genes, other well-characterized and conserved Sm-like genes including *edc-3* and *car-1* encode larger proteins containing other functional domains (Supplemental Fig. S1A; Squirrell et al. 2006; Tritschler et al. 2007).

The study of LSM proteins in multicellular organisms has biomedical relevance since the overexpression of LSM1/CaSm (cancer-associated Sm-like) has been associated with malignant development in diverse types of human cancers (Streicher et al. 2007; Watson et al. 2008), although the causal oncogenic mechanism of LSM1 in tumor cells is unknown.

RESULTS AND DISCUSSION

LSM-1 and LSM-3 are not essential for *C. elegans* viability but contribute to the regulation of development, reproduction, and motility

To shed light on the roles of the LSM complexes in *C. elegans*, we initiated functional studies of the components of the two canonical complexes as well as for Y48G1C.9, K07A1.15, and C49H3.4. First, we performed RNAi using both feeding and injection methods (Table 1). These experiments showed that (i) the three genes encoding LSM proteins that are not present in the canonical complexes are not

required for the viability of the animals; and (ii) there is a heterogeneous phenotypic signature for the core *lsm* genes: *lsm-2*, *lsm-4*, *lsm-5*, *lsm-6*, *lsm-7*, and *lsm-8* are essential, while *lsm-1* and *lsm-3* are not. These phenotypes are consistent with genetic data in yeast with the exceptions of *lsm6* and *lsm7*, which are not essential in yeast (Supplemental Table S1); and *lsm3*, which is essential (Mayes et al. 1999; Salgado-Garrido et al. 1999). Therefore, *lsm1/lsm-1* is the only nonessential member in both organisms.

We validated our RNAi results by analyzing mutants for *lsm-1* and *lsm-3*. Both these mutants contain deletions that lack almost half of their transcripts, disrupting the Sm-like domain of the proteins (Fig. 1A). Both deletions are putatively functional null alleles since the corresponding dsRNAs delivered by microinjection did not further modify the mutant phenotype (Supplemental Fig. S1B). *lsm-1(tm3585)* and *lsm-3(tm5166)* mutant strains are viable but display pleiotropic phenotypes. Both mutations cause a low incidence of larval arrest, adult lethality, and embryonic lethality (Table 2). Moreover, *lsm-1(tm3585)* and *lsm-3(tm5166)* both exhibit reduced locomotor activity (Fig. 1B), are small compared with wild-type worms (Fig. 1C) and result in reduced brood sizes (Rbs) at 15°C. This Rbs phenotype is more pronounced at higher temperatures (Fig. 1D). We detected a reduction in the number of germ cells in adult *lsm-1* worms compared with wild-type worms (Supplemental Fig. S1C), which is the possible cause of the reduced fertility. Low brood size was also observed for worms with mutations in other P body components such as homologs of the decapping enzyme DCAP-2/Dcp2 and the translation repression related protein CGH-1/Dhh1 (Supplemental Fig. S1D).

We generated a transgenic strain containing integrated copies of a LSM-1::GFP reporter with the *lsm-1(tm3585)*. The reporter rescued the developmental and Rbs phenotypes

TABLE 1. Phenotypic analysis classifies *lsm* genes in distinct functional categories

Gene targeted	Canonical complex	RNAi by feeding		RNAi by injection F1
		P0	F1	
<i>lsm-1</i> ^a	Cytoplasmic	Rbs	Rbs, Gro	Rbs, Gro, low% Emb
<i>lsm-2</i>	Cytoplasmic/nuclear	Rbs, Ste	—	100% Emb
<i>lsm-3</i> ^a	Cytoplasmic/nuclear	Rbs	Rbs, Gro	Rbs, Gro, low % Emb
<i>lsm-4</i>	Cytoplasmic/nuclear	Rbs	Ste, Lva	100% Emb
<i>lsm-5</i>	Cytoplasmic/nuclear	Rbs	Ste	100% Emb
<i>lsm-6</i>	Cytoplasmic/nuclear	Rbs	Ste, Lva	100% Emb
<i>lsm-7</i>	Cytoplasmic/nuclear	Rbs	Ste, Lva	100% Emb
<i>lsm-8</i>	Nuclear	Rbs	Ste, Lva	100% Emb
Y48G1C.9 ^a	Not applicable	WT	WT	WT
K07A1.15 ^a	Not applicable	WT	WT	WT
C49H3.4 ^a	Not applicable	WT	WT	WT

The table summarizes the RNAi phenotypes of the 11 *lsm* genes tested relative to control animals (treated with an empty-vector clone). Phenotypes are abbreviated as follows: (Rbs) Reduced brood size, (Gro) slow growth, (Lva) larval arrest, (Ste) sterile, (Emb) embryonic lethal, and (WT) wild type.

^a*lsm* genes whose RNAi knockdown produces viable phenotypes.

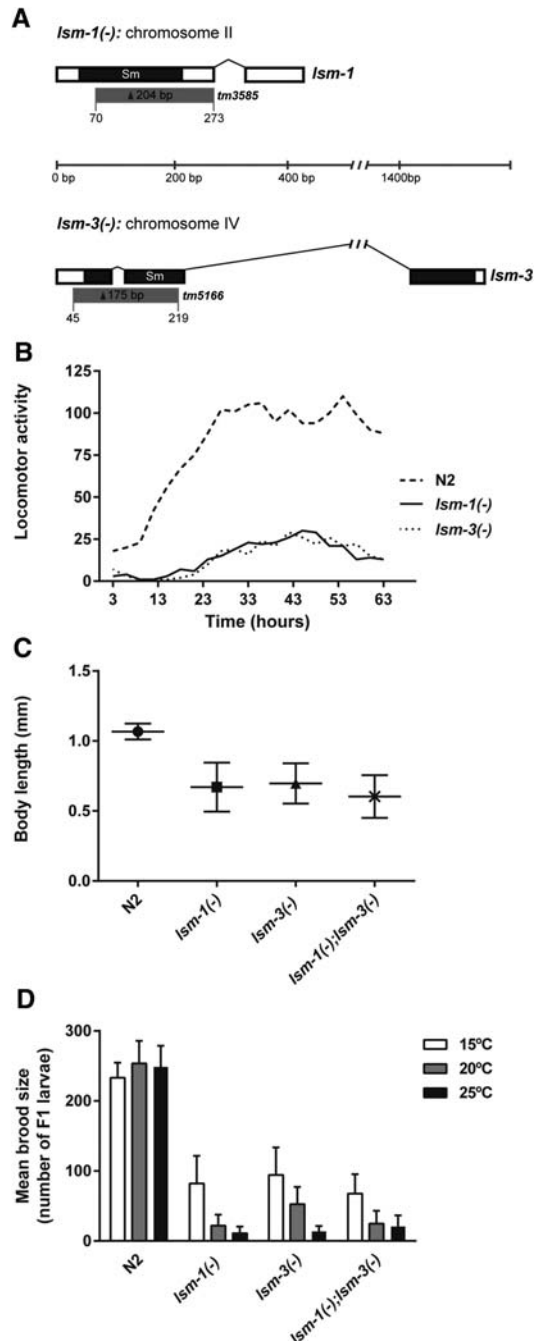


FIGURE 1. Characterization of *lsm-1* and *lsm-3* mutants. (A) Gene structures of *lsm-1* and *lsm-3*. White boxes represent exons. Connecting lines represent introns. Black areas indicate the regions encoding the conserved Sm domain. Gray boxes represent regions deleted by *lsm-1(tm3585)* and *lsm-3(tm5166)* alleles; (bp) base pair scale. (B) Measure of animal motility using an automated locomotor tracking system (Simonetta and Golombek 2007). Locomotor activity plots showing the activity of L4 worms at 20°C (1 worm/well in a 96-well microplate, eight wells per genotype were analyzed). Each dot corresponds to the mean activity (measured in bins/hour) of 3 h intervals. (C) Graph representing the body length of young adults (grown for 48 h at 25°C from L1 stage). Mean and standard deviations are plotted ($n \geq 100$ worms per genotype tested). (D) Brood sizes of wild type (N2) and the indicated mutant strains. Bars represent the standard deviation among individuals ($n \geq 20$).

(Supplemental Fig. S1E), indicating that the *lsm-1* deletion is directly responsible for the observed phenotypes and demonstrated that our integrated LSM-1::GFP reporter is functional.

In yeast, *lsm3* is essential for viability and necessary for correct splicing (Mayes et al. 1999). Since spliceosome core components are expected to be essential in *C. elegans* (Kamath et al. 2003; Rual et al. 2004; Kerins et al. 2010), the viability of *lsm-3* mutants argues against a central role for LSM-3 in splicing. To test for any relevance of *lsm-3* in this process, we generated a strain carrying a GFP reporter for constitutive splicing and the *lsm-3* deletion. These animals displayed normal GFP expression in the intestinal nuclei, indicating that LSM-3 is not required for constitutive splicing (Supplemental Fig. S2A).

Given that neither *lsm-1* nor *lsm-3* are necessary for the survival of the animal, we tested to see if these genes have redundant functions by making a double homozygous mutant strain. The lack of a synthetic phenotype (Fig. 1C,D) and the fact that *lsm-3* and *lsm-1* mutants phenocopy each other indicate that these genes are not redundant but might participate in the same cellular processes during reproduction and development.

We also tested for additional synthetic interactions between the nonessential *lsm* genes in *C. elegans* by microinjecting combinations of diverse dsRNAs (Supplemental Fig. S1F). Since we did not observe any synthetic interaction, we concluded that *C. elegans*' LSM family does not function as in *Arabidopsis*, where functional redundancies among LSM proteins are evident (Perea-Resa et al. 2012).

In summary, our analysis showed that *lsm-1* and *lsm-3* are the only nonessential genes coding for members of the canonical LSM complexes, nevertheless, they are required for normal *C. elegans* development and health.

Expression of *lsm* genes in *C. elegans*

In addition to the apparent functional diversity of the *lsm* genes in *C. elegans*, we wanted to know if differences also exist at the regulatory level. The features of *lsm* genes in the *C. elegans* genome indicate heterogeneity in terms of regulatory regions because *lsm* genes present distinct UTR sequences and four out of the eleven genes are located in predicted operons (Supplemental Fig. S3A). We produced reporter constructs by PCR fusion (Hobert 2002) to generate promoter::GFP::unc-54_3'-UTR transgenic lines for the 11 *lsm* genes studied in this report (Supplemental Table S3). All promoters reported expression except for K07A1.15. We analyzed fluorescence intensities for several identifiers in *C. elegans*' anatomy and observed overlapping but distinct gene expression patterns across family members (Supplemental Fig. S3B). However, these transcriptional reporters provide insufficient information to draw major conclusions because they do not contain all the regulatory sequences. As an example of the importance of other regulatory regions, a translational reporter for *lsm-4* in a fosmid context (including UTRs and introns)

TABLE 2. Phenotypes caused by mutations in *lsm-1* and *lsm-3*

Strains	%Emb	%Lva	%Let
<i>lsm-1</i> (-)	19.1 ± 19.8 (n = 511)	9.4 ± 1.5 (n = 2035)	8.1 ± 0.9 (n = 1340)
<i>lsm-3</i> (-)	8.4 ± 5.8 (n = 845)	12.5 ± 0 (n = 1912)	5.7 ± 1.6 (n = 1911)

Synchronized L1 worms were seeded on NGM plates and phenotypes scored after 48 h at 20°C. (Emb) Embryonic lethality, (Lva) larval arrest, and (Let) adult lethality. Mean values and ± standard deviations are shown. (n) The total number of eggs or individuals scored for each phenotype.

was ubiquitously expressed although with apparent varying levels depending on the cell type (Supplemental Fig. S3C).

However, this localizome study showed that internal promoters can drive the expression of *lsm* genes located within different purported operons (as *lsm-3* and *lsm-8*). Since both SL1 and SL2 splice leaders have been detected upstream of their messenger RNA (Allen et al. 2011), the activity of these internal promoters may not fully capture the endogenous expression pattern.

lsm-1 and *lsm-3* are required for various stress responses

To gain insight into LSM-1 functions, the LSM protein with the highest biomedical relevance, we compared the transcriptomes of L3 (where the germline is not yet fully developed) *lsm-1(tm3585)* and wild-type animals (Supplemental Table S4). RNA-seq data suggest that genes related to the Insulin/IGF-1 signaling (IIS) pathway are mis-regulated in *lsm-1(tm3585)* mutants (Supplemental Table S4; McElwee et al. 2003; Murphy et al. 2003; Liu et al. 2004; Halaschek-Wiener et al. 2005; Oh et al. 2006; Pinkston-Gosse and Kenyon 2007; Lee et al. 2009; Schuster et al. 2010). The IIS pathway has been associated with immune response and stress protection, processes interconnected and regulated by DAF-2, which is the *C. elegans* ortholog of the insulin-like growth factor-1 (IGF-1) receptor (Troemel et al. 2006; Singh and Aballay 2009; Murphy and Hu 2013). In *C. elegans*, DAF-2 activity keeps the FOXO transcription factor DAF-16 in the cytoplasm. However, inactivation of DAF-2 signaling allows DAF-16 to translocate to the nucleus, thus inducing stress response at the transcriptional level (Yen et al. 2011).

Remarkably, among the top 24 up-regulated genes (fold change >3, Supplemental Table S4) in *lsm-1(tm3585)* mutants, we found four genes that are normally down-regulated by the IIS effector DAF-16 (C32H11.4, C32H11.9, *dod-21*, and *dod-24*) (Murphy et al. 2003). Moreover, *pud-1.1* and *pud-2.2*, which are up-regulated in *daf-2* mutants (Dong et al. 2007), are among the top 17 down-regulated genes (fold change < -3, Supplemental Table S4) in *lsm-1(tm3585)* mutants. Therefore, our transcriptome data point toward a DAF-16 deficiency in *lsm-1(tm3585)* mutants under normal conditions.

To further investigate the functional relationship between LSM-1 and the IIS pathway, we studied the stress-induced

nuclear translocation dynamics of DAF-16 in the *lsm-1(tm3585)* mutant background. Interestingly, we observed that upon heat stress the translocation of DAF-16 to the nucleus is impaired in *lsm-1(tm3585)* mutants (Fig. 2A,B), a defect previously associated with diminished stress resistance (Lin et al. 2001). We observed a delay in the DAF-16 nuclear translocation although most of DAF-16 is eventually relocated to the nuclei.

Such an effect is a hallmark of mutations that affect the correct function of the IIS pathway (Chiang et al. 2012). The DAF-16::GFP reporter that we used and *lsm-3* are located in the same chromosome, making the generation of a genetic hybrid difficult. Thus to test the impact of *lsm-3* on DAF-16 nuclear relocalization kinetics, we injected *lsm-3* dsRNA and *lsm-1* dsRNA as positive controls in a DAF-16::GFP strain. In both cases, we observed a defect in DAF-16 nuclear translocation upon heat shock (Supplemental Fig. S2B).

Consistent with our previous observations, we found that *lsm-1(tm3585)* and *lsm-3(tm5166)* mutants were sensitive to heat stress (Fig. 2C), while strains overexpressing *lsm-1* displayed a significant thermoresistance, similar to that reported for *daf-2(e1370)* mutants where DAF-16 is constitutively nuclear and transcriptionally active (Fig. 2D; McColl et al. 2010). Furthermore, we also observed that *lsm-1(tm3585)* and *lsm-3(tm5166)* mutant L1 larvae were more sensitive to starvation than wild-type animals, whereas larvae with extra copies of *lsm-1* had a higher survival rate than wild-type worms (Fig. 2E). All these results support the idea that *lsm-1* and *lsm-3* contribute to stress responses through the IIS pathway in *C. elegans* and that *lsm-1* levels influence the robustness of these responses.

The IIS pathway also regulates resistance to bacterial infection and longevity (Evans et al. 2008). We observed that mutations in *lsm-1* and *lsm-3* cause heightened sensitivity to infection by certain pathogens (Fig. 3A) and have negative effects on lifespan (Fig. 3B). However, ectopic *lsm-1* expression does not protect *C. elegans* from pathogens or extend its lifespan (Fig. 3). Moreover, the *daf-2(m577)* extended lifespan requires *lsm-1* and *lsm-3*, and the short lifespan of *daf-16(mu86)* mutants is shortened by *lsm-1(tm3585)*, suggesting that the harmful effect of the *lsm-1* mutation on longevity is independent of the regulation of DAF-16 nuclear location.

Redistribution of cytoplasmic LSM proteins in stress conditions

We generated integrated transgenic reporter lines for LSM-1 and LSM-4, which allowed the tracking of nuclear and cytoplasmic LSM complexes in the germline and early embryo. As previously observed in other systems (Ingelfinger et al. 2002; Spiller et al. 2007), LSM-1 was located exclusively in the

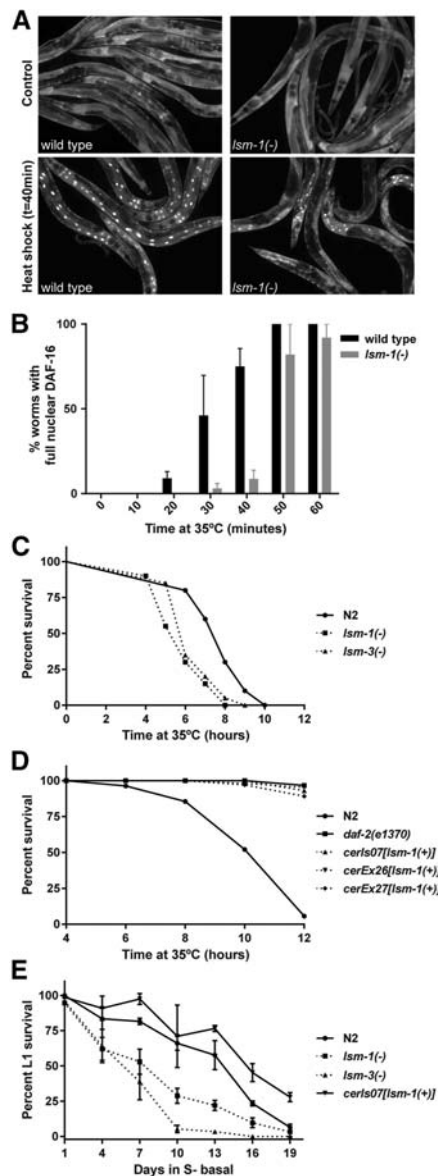


FIGURE 2. *lsm-1* promotes DAF-16 nuclear localization upon stress and influences stress responses. (A) *lsm-1* is required for proper stress-induced DAF-16 nuclear translocation. Fluorescence images of DAF-16::GFP in wild-type (N2) and *lsm-1* mutant animals grown at 25°C, and after a 40 min heat shock at 35°C. (B) Time-course analysis of DAF-16::GFP nuclear accumulation in response to heat stress. The histogram represents the average of percentages of worms with full nuclear DAF-16::GFP in three independent experiments ($n \geq 50$ for each strain and time point). Error bars, SEM. (C) Representative graph of experiments (see Supplemental Fig. S4A) showing the significant reduced resistance to heat stress caused by mutations in *lsm-1* and *lsm-3* (P -value < 0.001). Young adult worms were incubated at 35°C and survival was scored every hour. (D) Representative graph of experiments (see Supplemental Fig. S4A) showing the significant resistance to heat stress caused by three distinct strains overexpressing *lsm-1* (P -value < 0.001). *daf-2(e1370)* were used as positive control for heat stress resistance. Young adult worms were incubated at 35°C and survival was scored every 2 h. (E) *lsm-1* and *lsm-3* mutations reduce the survival of L1 larvae during starvation at 20°C. Ectopic expression of *lsm-1* through the integrated reporter LSM-1::GFP displayed a significant survival to starvation compared with wild-type (N2) animals after 19 d (P -value < 0.001). Graph represents the mean percentage of survival and standard deviations from three experimental replicates ($n \geq 100$ for each replicate and time point).

cytoplasm whereas LSM-4 was expressed both in the nucleus and cytoplasm (Fig. 4A).

As previously reported in *C. elegans*, we observed constitutive cytoplasmic LSm granules in the early embryo in somatic blastomeres (Fig. 4A; Gallo et al. 2008). However, we found that in young adult animals the distribution of cytoplasmic LSm proteins was diffuse rather than located in aggregates (Fig. 4B). However, under heat stress, adult animals expressing LSM-1::GFP or LSM-4::GFP showed cytoplasmic GFP granules (Fig. 4B). Microscopic analysis of the LSM-4::GFP reporter in *lsm-1* mutants indicated that the formation of cytoplasmic LSm granules after stress was dependent on the presence of LSM-1 (Fig. 4B).

In summary, while the formation of cytoplasmic LSm granules is constitutive in some embryonic cells, the accumulation of visible LSm granules in larvae and adults may occur upon stress only, in an LSM-1-dependent manner.

The described competition of LSm8 and LSm1 for the common components of the LSm complexes (LSm2-7) implies that nuclear and cytoplasmic functions are somehow interconnected, and such co-regulation should be carefully studied in multicellular organisms (Spiller et al. 2007; Novotny et al. 2012).

Cytoplasmic LSm granules: P-bodies or stress granules?

In yeast and humans, the LSm1-7 complex has been associated with P bodies (PBs) (Kedersha and Anderson 2007). PBs are dynamic cytoplasmic aggregates of proteins and RNA molecules that participate in diverse processes related to RNA metabolism such as translational repression and mRNA degradation (Sheth and Parker 2006; Parker and Sheth 2007; Buchan et al. 2010). In particular, the LSm1-7 complex has been implicated in the 5'-3' mRNA decay machinery as a decapping activator of oligoadenylated mRNAs in P-bodies (Tharun 2009).

Stress granules (SGs) are another type of cytoplasmic aggregate, composed of nontranslating mRNAs and diverse proteins related to mRNA processing that form when translational initiation is impaired (for example, when cells are exposed to environmental stresses) (Buchan and Parker 2009).

PBs and SGs are dynamic structures that share some protein components and can physically interact (Kedersha and Anderson 2007; Buchan et al. 2010); however, the physiological roles of these aggregates are not well understood and the classification of proteins within one or another is mostly based on protein co-localization experiments with previously characterized proteins.

In the *C. elegans* embryo, it has been shown that LSM-1::GFP co-localizes with other PB components, but the presence of visible LSM-1::GFP granules is not required for mRNA degradation (Gallo et al. 2008). Comparing the localization of LSM-1 to the known P bodies component DCAP-

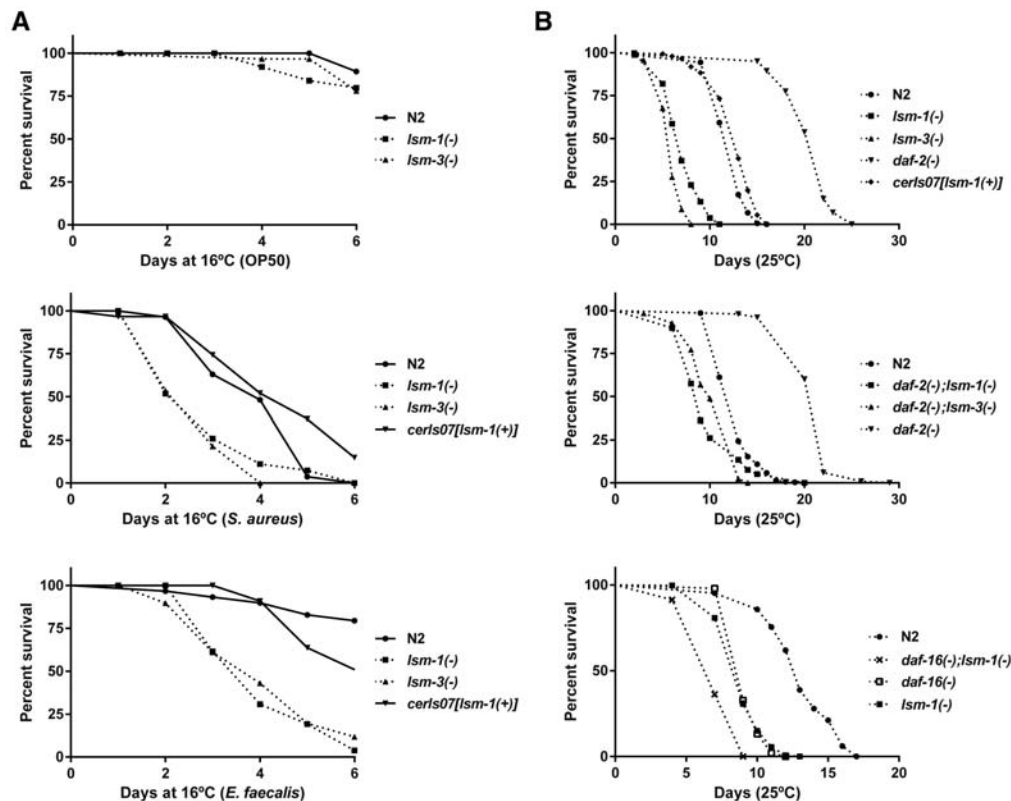


FIGURE 3. Mutations in *lsm-1* and *lsm-3* cause hypersensitivity to pathogen infection and affect IIS-induced longevity. (A) Representative graph of survival experiments (see Supplemental Fig. S4B) of wild-type (N2) and mutant strains on *Escherichia coli* OP50, *Staphylococcus aureus*, and *Enterococcus faecalis* ($n = 30$). No significant differences were observed after 6 d on OP50 between *lsm-1* and *lsm-3* mutants compared with wild-type (N2) animals. Differences between *lsm-1* and *lsm-3* mutants were significant compared with wild-type (N2) after pathogen infection ($0.01 < P$ -value < 0.001 in all cases). (B) Representative graphs showing lifespan analysis (see Supplemental Fig. S4C) of wild-type (N2) and different mutant and transgenic strains. *daf-2(m577)* and *daf-16(mu86)* mutants were used as control for extended and shortened lifespans, respectively.

2, which is the catalytic enzyme of the 5′–3′ decapping step in PBs, shows they are different. In developing *C. elegans* embryos, LSM-1 is present only in somatic blastomeres, whereas DCAP-2 localizes in P granules in germline blastomeres (Lall et al. 2005). Another PB component, the decapping enzyme DCAP-1, localizes in granules that are only weakly reduced upon *lsm-1* RNAi inactivation (Sun et al. 2011). Moreover, in adult animals, although DCAP-1-positive granules have been described to increase in size with age (Sun et al. 2011), we did not observe this effect in LSM-1::GFP worms (not shown).

Distinct cytoplasmic aggregates can share many RNA-binding proteins and depending on cellular conditions, these factors can relocate from one type of granule to another (Buchan 2014). Since LSM-1::GFP aggregates in stress conditions, LSM-1 may shuttle between PBs and SGs depending on physiological or environmental conditions. To confirm the aggregation of LSM-1 in SGs, we used an RFP-tagged TIAR-1 (TIA-1-related), which is a RNA-binding protein described as a SG component (Kedersha et al. 1999). We observed the co-localization of LSM-1::GFP and TIAR-1::RFP under heat stress (Fig. 4C), suggesting that LSM-1 can also

accumulate in SG under specific conditions. In mammalian cells, LSM1 is mostly P body-specific in the absence of stress, although it has been observed associated with some types of stress granules (Kedersha and Anderson 2007).

Since the single bacterial LSm protein homolog Hfq is also required for stress responses in bacteria (Wilusz and Wilusz 2013), the capability of LSm proteins to chaperone RNA–protein and RNA–RNA interactions seems to be conserved through evolution as an adaptive response, distributing RNA molecules and regulating protein synthesis, to cope with adverse environmental conditions. Interestingly, such a response in *C. elegans* seems to be linked to the IIS pathway, also evolutionary conserved in Metazoa.

Concluding remarks

Through a comprehensive phenotypic analysis of the *lsm* family in *C. elegans*, we have uncovered the role of cytoplasmic LSm proteins in *C. elegans* stress response. We found that LSM-1 is required to establish a primary response to stress through two known mechanisms: (i) the translocation of DAF-16 to the nucleus, and (ii) the formation of cytoplasmic

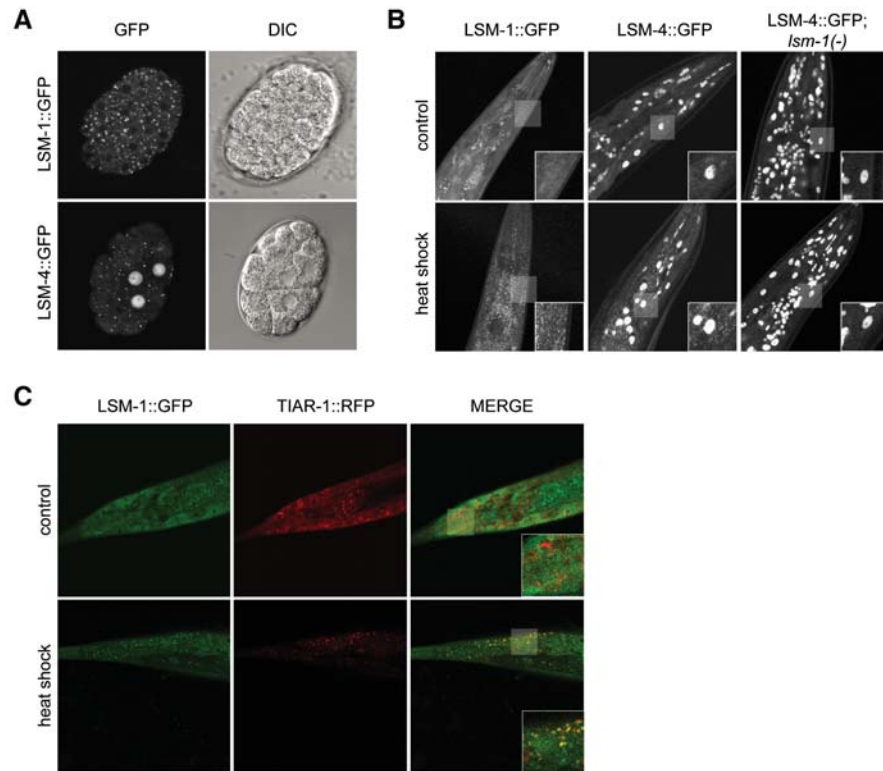


FIGURE 4. LSM proteins accumulate in cytoplasmic foci in specific stages and conditions. (A) LSM proteins accumulate in cytoplasmic granules during embryogenesis. Confocal images of embryos expressing LSM-1::GFP in the cytoplasm and LSM-4::GFP in the nucleus and the cytoplasm. Right panels show the same embryos visualized under differential interference contrast (DIC). (B) LSM accumulation in cytoplasmic granules in adult cells is induced by heat stress (1 h at 35°C) (additional images in Supplemental Fig. S5) and is dependent on *lsm-1*. Confocal images (Z hyperstack) of the head of young adult worms expressing LSM-1::GFP and LSM-4::GFP in control (20°C) and after heat-shock. (C) LSM-1 granules colocalize with TIAR-1 granules under heat-stress conditions (1 h at 35°C). Confocal images of the tail of L4 worms coexpressing LSM-1::GFP and RFP::TIAR-1.

granules. To the best of our knowledge, this is the first time that a functional link has been observed between these two mechanisms in the stress response.

Regarding the link between LSM1 and cancer, it is tempting to establish a parallel between cancer cells and the conditions required in *C. elegans* for LSM-1 cytoplasmic aggregation, namely, rapid cell division in the embryo and environmental stress. Thus, we present *C. elegans* as an excellent model to further investigate the impact of cytoplasmic Lsm proteins in cellular metabolism and cancer.

MATERIALS AND METHODS

Strains

Caenorhabditis elegans strains were cultured and maintained using standard procedures (Stiernagle 2006; Porta-de-la-Riva et al. 2012). Bristol N2 was the wild-type strain, and the following alleles and transgenic strains were used: CER60: *lsm-1(tm3585)*II, CER59: *lsm-3(tm5166)*IV, CER36: *lsm-1(tm3585)*II, *lsm-3(tm5166)*IV, CB1370: *daf-2(e1370)*III, CF1038: *daf-16(mu86)*I, BL3466: *inIs173[PNvitgfp]*, TJ356: *zIs356[Pdaf-16::daf-16::gfp,rol-6(su1006)]*IV, DR1567: *daf-2(m577)*III, CER154: *lsm-1(tm3585)*II;*daf-2(m577)*III, CER158: *lsm-1(tm3585)*II;*daf-16(mu86)*I, CER159: *lsm-3*

(*tm5166*)IV;*daf-2(m577)*III, DG1701: *cgh-1(tm691)*III and RB1641: *dcap-2(ok2023)*IV.

We also generated the following transgenic strains: CER26: *unc-119(ed3)*III; *cerEx26[Plsm-1::lsm-1::gfp::lsm-1_3'UTR, unc-119(+)]*, CER27: *unc-119(ed3)*III; *cerEx27[Plsm-1::lsm-1::gfp::lsm-1_3'UTR, unc-119(+)]*, CER41: *unc-119(ed3)*III; *cerIs02[Plsm-4::lsm-4::gfp::lsm-4_3'UTR, unc-119(+)]*, CER157: *unc-119(ed3)*III; *cerIs07[Plsm-1::lsm-1::gfp::lsm-1_3'UTR, unc-119(+)]*, CER152: *cerIs02; lsm-1(tm3585)*II, CER155: *zIs356IV;lsm-1(tm3585)*II, CER129: *inIs173[PNvitgfp];lsm-3(tm5166)*IV, CER162: *cerIs07;lsm-1(tm3585)*II, CER166: *cerIs07;cerEx42[Ptiar-1::RFP::tiar-1ORF::tiar-1_3'UTR +rol-6(+)]*.

Generation of transgenic animals

For the generation of *lsm-1* and *lsm-4* translational reporters, fosmid vectors containing a GFP-tagged version of these genes were requested from the Transgeneome resource (Sarav et al. 2012) and transformation was performed by bombardment with gold particles (Biolistic Helium Gun, Caenotec). *unc-119(ed3)* young adults were shot with 16 µg of the purified DNA of interest (Praitis et al. 2001).

For the co-localization experiments, CER157 animals expressing integrated copies of LSM-1::GFP were injected with a mix containing 80 ng/µL of a RFP::TIAR-1 construct (Rousakis et al. 2014) and 20 ng/µL of the linearized roller marker pRF4 [*rol-6(su1006)*].

Transcriptional reporters, described in the Supplemental Material, were constructed by PCR fusion (Hobert 2002).

RNAi

The RNAi clones used in this study were obtained from the ORFeome library (Rual et al. 2004) (*lsm-1*, *lsm-3*, *lsm-5*, *lsm-7*, C49H3.4) or the Ahringer library (Kamath et al. 2003) (*lsm-2*, *lsm-4*, *lsm-6*). We completed the *lsm* family RNAi clone collection by amplifying the cDNAs of *lsm-8*, Y48G1C.9, and K07A1.15, and cloning them into a L4440 vector by ligation after digestion with restriction enzymes. All RNAi clones were verified by sequencing. RNA-mediated interference (RNAi) by feeding was performed following standard conditions (Fontrodona et al. 2013), using a concentration of 3 mM IPTG on the RNAi plates. To induce RNAi by microinjection, specific dsRNAs were synthesized by using the MEGascript T7 kit (Ambion). Young adult animals were injected with 1 µg/µL of the dsRNA of interest.

RNA-seq analyses

N2 wild-type and *lsm-1(tm3585)* L1 synchronized worms were grown and harvested at L3 stage (26 h at 25°C). Animals were washed with M9 buffer to remove bacteria, and pellet frozen in TRIzol. Total RNA purification was performed using the *mirVana* miRNA isolation kit (Ambion) followed by Ribosomal RNA depletion with the RiboMinus Eukaryote Kit (Invitrogen). RNA quality was verified in the *Experion Bioanalyzer* (Bio-Rad). We used an *Illumina* kit to make libraries that were run through a Genome Analyzer IIX Ultrasequencer (*Illumina*). Each sample produced ~10 million reads that were processed using TopHat (Trapnell et al. 2009) to be mapped against the *C. elegans* genome (WS225). BAM files were analyzed with the SeqSolve NGS software (Integratics, S.L.) using a false discovery rate of 0.05, and filtering reads displaying multiple mapping sites. SeqSolve uses Cufflinks (Trapnell et al. 2010) and Cuffdiff (Trapnell et al. 2013) programs to perform differential gene expression analyses between samples (*P*-value < 0.005). Expression values were normalized in FPKM (fragments per kilobase of exon per million fragments mapped).

Stress assays

For thermotolerance assays, L4 animals grown at 16°C were transferred to plates seeded with OP50 bacteria and grown to day 1 of adulthood. Next, worms (*n* = 40) were transferred to two 6 cm plates without any food and incubated at 35°C. Viability was scored at several time points; death was determined by the lack of movement and/or pharyngeal pumping after prodding.

To quantify DAF-16::GFP subcellular localization, L4 worms grown at 16°C were shifted to 25°C until they reached day 1 adult stage. GFP was analyzed using an Axio Imager Z1 Zeiss microscope at 40× magnification before and after heat shock at 35°C. For heat shock time-course analyses, worms were scored for the presence or absence of GFP accumulation in the nuclei of somatic cells along the body every 10 min at 35°C. Animals were scored as having full nuclear GFP if DAF-16::GFP was observed in the nucleus of somatic cells homogeneously from head to tail.

L1 starvation assay was performed as previously described by Zhang et al. (2011). Briefly, adult worms were bleached and the re-

sulting eggs were resuspended in 4–6 mL S-basal without cholesterol in 15-mL tubes. Egg prep was filtered using a 40 µm nylon cell strainer (BD Falcon) in order to remove debris and larger clumps of unhatched eggs derived from the bleaching. Tubes were incubated rotating at 20°C. To determine larval viability, 20-µL aliquots (~100 worms) were placed every 3 d onto three 6-cm nematode growth medium (NGM) plates and survival rates were calculated.

For bacterial pathogen assays, L4 worms grown at 16°C (*n* = 10 for each genotype) were cultured in the presence of pathogenic bacteria as the sole food source, and the number of survivors was counted every day. *Enterococcus faecalis* OG1RF was grown in BHI with 40 µg/mL of gentamycin. *Staphylococcus aureus* NTCT8325 was grown in TSB with 10 µg/mL of nalidixic acid.

For all the stress assays, graphical representation of survival curves and Kaplan-Meier statistical analyses were made using GraphPad Prism 4.0 software (GraphPad Software Inc.) *P*-values were obtained applying the Mantel-Cox logrank test.

Lifespan experiments

A synchronized population of L1 larvae was grown at 15°C for 72 h until they reached L4 stage. At that point, worms were washed from the plate using sterile M9 buffer and transferred (at least 100 animals per experiment) onto NGM plates seeded with OP50 and 0.1 mg/mL 5-fluoro-2'-deoxyuridine (FUDR) to chemically inhibit reproduction and to eliminate any effects reproduction might have on longevity. The viability of the worms, cultured at 25°C was scored every two or three days. Animals that failed to respond to stimulation by touch were considered dead. Day 0 of adulthood was defined as the day that mid-to-late L4s were transferred to NGM-FUDR plates and maintained at 25°C. Survival curves were made with GraphPad Prism 4.0 software.

SUPPLEMENTAL MATERIAL

Supplemental material is available for this article.

ACKNOWLEDGMENTS

We thank the CGC (Caenorhabditis Genetics Center) and the Japanese *C. elegans* knockout consortium (National BioResource Project, NBRP) for providing strains; Dr. Popi Syntichaki for providing us with constructs; and Dr. Anne Royou and members from the Royou laboratory for confocal microscopy technical advice. This work was supported by a grant from the Instituto de Salud Carlos III (ISCIII) (Exp. PI12/01554). R.J. and D.B. were supported by a Natural Sciences and Engineering Research Council (NSERC) Canada grant. D.B. holds a Canada Research Chair. J.C. is a Miguel Servet Researcher (ISCIII). E.C. was supported with a CTP-AIRE fellowship from AGAUR (Generalitat de Catalunya) and a TRANSBIO SUDOE collaborative project.

Author contributions: E.C., D.D., and J.C. conceived and designed the experiments. E.C., D.A., M.P., A.B., I.E., M.S., L.F., F.J., K.R., and J.C. performed the experiments. E.C., D.D., and J.C. analyzed the data. R.J., D.B., M.M., and M.D. contributed reagents/materials/analysis tools. E.C., D.D., and J.C. wrote the paper.

Received April 27, 2015; accepted June 6, 2015.

REFERENCES

- Allen MA, Hillier LW, Waterston RH, Blumenthal T. 2011. A global analysis of *C. elegans* trans-splicing. *Genome Res* **21**: 255–264.
- Buchan JR. 2014. mRNP granules: assembly, function, and connections with disease. *RNA Biol* **11**: 1019–1030.
- Buchan JR, Parker R. 2009. Eukaryotic stress granules: the ins and outs of translation. *Mol Cell* **36**: 932–941.
- Buchan JR, Nissan T, Parker R. 2010. Analyzing P-bodies and stress granules in *Saccharomyces cerevisiae*. *Methods Enzymol* **470**: 619–640.
- Ceron J, Rual J-F, Chandra A, Dupuy D, Vidal M, Van Den Heuvel S. 2007. Large-scale RNAi screens identify novel genes that interact with the *C. elegans* retinoblastoma pathway as well as splicing-related components with synMuv B activity. *BMC Dev Biol* **7**: 30.
- Chiang W-C, Tishkoff DX, Yang B, Wilson-Grady J, Yu X, Mazer T, Eckersdorff M, Gygi SP, Lombard DB, Hsu A-L. 2012. *C. elegans* SIRT6/7 homolog SIR-2.4 promotes DAF-16 relocalization and function during stress. *PLoS Genet* **8**: e1002948.
- Dong M-Q, Venable JD, Au N, Xu T, Park SK, Cociorva D, Johnson JR, Dillin A, Yates JR. 2007. Quantitative mass spectrometry identifies insulin signaling targets in *C. elegans*. *Science* **317**: 660–663.
- Evans E, Chen WC, Tan M-W. 2008. The DAF-2 insulin-like signaling pathway independently regulates aging and immunity in *C. elegans*. *Aging Cell* **7**: 879–893.
- Fernandez CF, Pannone BK, Chen X, Fuchs G, Wolin SL. 2004. An Lsm2-Lsm7 complex in *Saccharomyces cerevisiae* associates with the small nucleolar RNA snR5. *Mol Biol Cell* **15**: 2842–2852.
- Fontrodona L, Porta-de-la-Riva M, Morán T, Niu W, Díaz M, Aristizábal-Corralles D, Villanueva A, Schwartz S Jr, Reinke V, Cerón J. 2013. RSR-2, the *Caenorhabditis elegans* ortholog of human spliceosomal component SRm300/SRRM2, regulates development by influencing the transcriptional machinery. *PLoS Genet* **9**: e1003543.
- Gallo CM, Munro E, Rasoloson D, Merritt C, Seydoux G. 2008. Processing bodies and germ granules are distinct RNA granules that interact in *C. elegans* embryos. *Dev Biol* **323**: 76–87.
- Halaschek-Wiener J, Khattri JS, McKay S, Pouzyrev A, Stott JM, Yang GS, Holt RA, Jones SJM, Marra MA, Brooks-Wilson AR, et al. 2005. Analysis of long-lived *C. elegans* daf-2 mutants using serial analysis of gene expression. *Genome Res* **15**: 603–615.
- Hobert O. 2002. BioTechniques—PCR fusion-based approach to create reporter gene constructs for expression analysis in transgenic *C. elegans*. *Biotechniques* **32**: 728–730.
- Ingelfinger D, Arndt-Jovin DJ, Lüthmann R, Achsel T. 2002. The human Lsm1-7 proteins colocalize with the mRNA-degrading enzymes Dcp1/2 and Xrnl in distinct cytoplasmic foci. *RNA* **8**: 1489–1501.
- Kamath RS, Fraser AG, Dong Y, Poulin G, Durbin R, Gotta M, Kanapin A, Le Bot N, Moreno S, Sohrmann M, et al. 2003. Systematic functional analysis of the *Caenorhabditis elegans* genome using RNAi. *Nature* **421**: 231–237.
- Kedersha N, Anderson P. 2007. Mammalian stress granules and processing bodies. *Methods Enzymol* **431**: 61–81.
- Kedersha NL, Gupta M, Li W, Miller I, Anderson P. 1999. RNA-binding proteins TIA-1 and TIAR link the phosphorylation of eIF-2 α to the assembly of mammalian stress granules. *J Cell Biol* **147**: 1431–1442.
- Kerins JA, Hanazawa M, Dorsett M, Schedl T. 2010. PRP-17 and the pre-mRNA splicing pathway are preferentially required for the proliferation versus meiotic development decision and germline sex determination in *Caenorhabditis elegans*. *Dev Dyn* **239**: 1555–1572.
- Lall S, Piano F, Davis RE. 2005. *Caenorhabditis elegans* decapping proteins: localization and functional analysis of Dcp1, Dcp2, and Dcp3 during embryogenesis. *Mol Biol Cell* **16**: 5880–5890.
- Lee S-J, Murphy CT, Kenyon C. 2009. Glucose shortens the life span of *C. elegans* by downregulating DAF-16/FOXO activity and aquaporin gene expression. *Cell Metab* **10**: 379–391.
- Lin K, Hsin H, Libina N, Kenyon C. 2001. Regulation of the *Caenorhabditis elegans* longevity protein DAF-16 by insulin/IGF-1 and germline signaling. *Nat Genet* **28**: 139–145.
- Liu T, Zimmerman KK, Patterson GI. 2004. Regulation of signaling genes by TGF β during entry into dauer diapause in *C. elegans*. *BMC Dev Biol* **4**: 11.
- Mayes AE, Verdone L, Legrain P, Beggs JD. 1999. Characterization of Sm-like proteins in yeast and their association with U6 snRNA. *EMBO J* **18**: 4321–4331.
- McColl G, Rogers AN, Alavez S, Hubbard AE, Melov S, Link CD, Bush AI, Kapahi P, Lithgow GJ. 2010. Insulin-like signaling determines survival during stress via posttranscriptional mechanisms in *C. elegans*. *Cell Metab* **12**: 260–272.
- McElwee J, Bubbs K, Thomas JH. 2003. Transcriptional outputs of the *Caenorhabditis elegans* forkhead protein DAF-16. *Aging Cell* **2**: 111–121.
- Mura C, Randolph PS, Patterson J, Cozen AE. 2013. A structural and evolutionary perspective on Sm function Archaeal and eukaryotic homologs of Hfq. *RNA Biol* **10**: 636–651.
- Murphy CT, Hu PJ. 2013. Insulin/insulin-like growth factor signaling in *C. elegans*. In *WormBook* (ed. The *C. elegans* Research Community). <http://www.wormbook.org>.
- Murphy CT, McCarroll SA, Bargmann CI, Fraser A, Kamath RS, Ahringer J, Li H, Kenyon C. 2003. Genes that act downstream of DAF-16 to influence the lifespan of *Caenorhabditis elegans*. *Nature* **424**: 277–283.
- Novotny I, Podolská K, Blazíková M, Valásek LS, Svoboda P, Stanek D. 2012. Nuclear LSM8 affects number of cytoplasmic processing bodies via controlling cellular distribution of Like-Sm proteins. *Mol Biol Cell* **23**: 3776–3785.
- Oh SW, Mukhopadhyay A, Dixit BL, Raha T, Green MR, Tissenbaum HA. 2006. Identification of direct DAF-16 targets controlling longevity, metabolism and diapause by chromatin immunoprecipitation. *Nat Genet* **38**: 251–257.
- Parker R, Sheth U. 2007. P bodies and the control of mRNA translation and degradation. *Mol Cell* **25**: 635–646.
- Perea-Resca C, Hernández-Verdeja T, López-Cobollo R, del Mar Castellano M, Salinas J. 2012. LSM proteins provide accurate splicing and decay of selected transcripts to ensure normal *Arabidopsis* development. *Plant Cell* **24**: 4930–4947.
- Pillai RS, Grimm M, Meister G, Will CL, Lüthmann R, Fischer U, Schümperli D. 2003. Unique Sm core structure of U7 snRNPs: assembly by a specialized SMN complex and the role of a new component, Lsm11, in histone RNA processing. *Genes Dev* **17**: 2321–2333.
- Pinkston-Gosse J, Kenyon C. 2007. DAF-16/FOXO targets genes that regulate tumor growth in *Caenorhabditis elegans*. *Nat Genet* **39**: 1403–1409.
- Porta-de-la-Riva M, Fontrodona L, Villanueva A, Cerón J. 2012. Basic *Caenorhabditis elegans* methods: synchronization and observation. *J Vis Exp* e4019.
- Praitis V, Casey E, Collar D, Austin J. 2001. Creation of low-copy integrated transgenic lines in *Caenorhabditis elegans*. *Genetics* **157**: 1217–1226.
- Rousakis A, Vlanti A, Borbolis F, Roumelioti F, Kapetanou M, Syntichaki P. 2014. Diverse functions of mRNA metabolism factors in stress defense and aging of *Caenorhabditis elegans*. *PLoS One* **9**: e103365.
- Rual J-F, Ceron J, Koreth J, Hao T, Nicot A-S, Hirozane-Kishikawa T, Vandenhaute J, Orkin SH, Hill DE, van den Heuvel S, et al. 2004. Toward improving *Caenorhabditis elegans* phenome mapping with an ORFeome-based RNAi library. *Genome Res* **14**: 2162–2168.
- Salgado-Garrido J, Bragado-Nilsson E, Kandels-Lewis S, Séraphin B. 1999. Sm and Sm-like proteins assemble in two related complexes of deep evolutionary origin. *EMBO J* **18**: 3451–3462.
- Sarov M, Murray JL, Schanze K, Pozniakovski A, Niu W, Angermann K, Hasse S, Rupprecht M, Vinis E, Tinney M, et al. 2012. A genome-scale resource for in vivo tag-based protein function exploration in *C. elegans*. *Cell* **150**: 855–866.
- Schuster E, McElwee JJ, Tullet JMA, Doonan R, Matthijssens F, Reece-Hoyes JS, Hope IA, Vanfleteren JR, Thornton JM, Gems D. 2010. DAF-16 in *C. elegans* reveals longevity-associated targets of DAF-16/FoxO. *Mol Syst Biol* **6**: 399.

- Sheth U, Parker R. 2006. Targeting of aberrant mRNAs to cytoplasmic processing bodies. *Cell* **125**: 1095–1109.
- Simonetta SH, Golombek DA. 2007. An automated tracking system for *Caenorhabditis elegans* locomotor behavior and circadian studies application. *J Neurosci Methods* **161**: 273–280.
- Singh V, Aballay A. 2009. Regulation of DAF-16-mediated innate immunity in *Caenorhabditis elegans*. *J Biol Chem* **284**: 35580–35587.
- Spiller MP, Reijns MAM, Beggs JD. 2007. Requirements for nuclear localization of the Lsm2-8p complex and competition between nuclear and cytoplasmic Lsm complexes. *J Cell Sci* **120**: 4310–4320.
- Squirrell JM, Eggers ZT, Luedke N, Saari B, Grimson A, Lyons GE, Anderson P, White JG. 2006. CAR-1, a protein that localizes with the mRNA decapping component DCAP-1, is required for cytokinesis and ER organization in *Caenorhabditis elegans* embryos. *Mol Biol Cell* **17**: 336–344.
- Stiernagle T. 2006. Maintenance of *C. elegans*. In *WormBook* (ed. The *C. elegans* Research Community). <http://www.wormbook.org>.
- Streicher KL, Yang ZQ, Draghici S, Ethier SP. 2007. Transforming function of the LSM1 oncogene in human breast cancers with the 8p11-12 amplicon. *Oncogene* **26**: 2104–2114.
- Sun Y, Yang P, Zhang Y, Bao X, Li J, Hou W, Yao X, Han J, Zhang H. 2011. A genome-wide RNAi screen identifies genes regulating the formation of P bodies in *C. elegans* and their functions in NMD and RNAi. *Protein Cell* **2**: 918–939.
- Tharun S. 2009. Roles of eukaryotic Lsm proteins in the regulation of mRNA function. *Int Rev Cell Mol Biol* **272**: 149–189.
- Tharun S, He W, Mayes AE, Lennertz P, Beggs JD, Parker R. 2000. Yeast Sm-like proteins function in mRNA decapping and decay. *Nature* **404**: 515–518.
- Tomasevic N, Peculis BA. 2002. Xenopus LSm proteins bind U8 snoRNA via an internal evolutionarily conserved octamer sequence. *Mol Cell Biol* **22**: 4101–4112.
- Trapnell C, Pachter L, Salzberg SL. 2009. TopHat: discovering splice junctions with RNA-Seq. *Bioinformatics* **25**: 1105–1111.
- Trapnell C, Williams BA, Pertea G, Mortazavi A, Kwan G, van Baren MJ, Salzberg SL, Wold BJ, Pachter L. 2010. Transcript assembly and quantification by RNA-Seq reveals unannotated transcripts and isoform switching during cell differentiation. *Nat Biotechnol* **28**: 511–515.
- Trapnell C, Hendrickson DG, Sauvageau M, Goff L, Rinn JL, Pachter L. 2013. Differential analysis of gene regulation at transcript resolution with RNA-seq. *Nat Biotechnol* **31**: 46–53.
- Tritschler F, Eulalio A, Truffault V, Hartmann MD, Helms S, Schmidt S, Coles M, Izaurralde E, Weichenrieder O. 2007. A divergent Sm fold in EDC3 proteins mediates DCP1 binding and P-body targeting. *Mol Cell Biol* **27**: 8600–8611.
- Troemel ER, Chu SW, Reinke V, Lee SS, Ausubel FM, Kim DH. 2006. p38 MAPK regulates expression of immune response genes and contributes to longevity in *C. elegans* ed. S. Kim. *PLoS Genet* **2**: e183.
- Veretnik S, Wills C, Youkharibache P, Valas RE, Bourne PE. 2009. Sm/Lsm genes provide a glimpse into the early evolution of the spliceosome. *PLoS Comput Biol* **5**: e1000315.
- Watson PM, Miller SW, Fraig M, Cole DJ, Watson DK, Boylan AM. 2008. CaSm (LSm-1) overexpression in lung cancer and mesothelioma is required for transformed phenotypes. *Am J Respir Cell Mol Biol* **38**: 671–678.
- Weichenrieder O. 2014. RNA binding by Hfq and ring-forming (L)Sm proteins: a trade-off between optimal sequence readout and RNA backbone conformation. *RNA Biol* **11**: 537–549.
- Wilusz CJ, Wilusz J. 2013. Lsm proteins and Hfq: life at the 3' end. *RNA Biol* **10**: 592–601.
- Yen K, Narasimhan SD, Tissenbaum HA. 2011. DAF-16/Forkhead box O transcription factor: many paths to a single Fork(head) in the road. *Antioxid Redox Signal* **14**: 623–634.
- Zhang X, Zabinsky R, Teng Y, Cui M, Han M. 2011. microRNAs play critical roles in the survival and recovery of *Caenorhabditis elegans* from starvation-induced L1 diapause. *Proc Natl Acad Sci* **108**: 17997–18002.



RNA

A PUBLICATION OF THE RNA SOCIETY

Cytoplasmic LSM-1 protein regulates stress responses through the insulin/IGF-1 signaling pathway in *Caenorhabditis elegans*

Eric Cornes, Montserrat Porta-De-La-Riva, David Aristizábal-Corrales, et al.

RNA 2015 21: 1544-1553 originally published online July 6, 2015

Access the most recent version at doi:[10.1261/rna.052324.115](https://doi.org/10.1261/rna.052324.115)

Supplemental Material

<http://rnajournal.cshlp.org/content/suppl/2015/06/19/rna.052324.115.DC1>

References

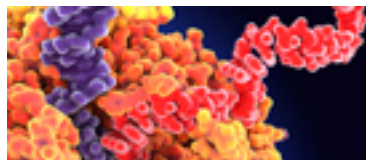
This article cites 60 articles, 20 of which can be accessed free at:
<http://rnajournal.cshlp.org/content/21/9/1544.full.html#ref-list-1>

Creative Commons License


This article is distributed exclusively by the RNA Society for the first 12 months after the full-issue publication date (see <http://rnajournal.cshlp.org/site/misc/terms.xhtml>). After 12 months, it is available under a Creative Commons License (Attribution-NonCommercial 4.0 International), as described at <http://creativecommons.org/licenses/by-nc/4.0/>.

Email Alerting Service

Receive free email alerts when new articles cite this article - sign up in the box at the top right corner of the article or [click here](#).



Use CRISPRmod for targeted modulation of endogenous gene expression to validate siRNA data



To subscribe to RNA go to:
<http://rnajournal.cshlp.org/subscriptions>
